

NAMES OF OBJECTS AND PLACES



Water Cruet – brought up to the Altar by Server 2 after the General Intercessions (along with the chalice & purificator). It is held by Server 1 during the washing of the hands and is used by the clergy.

Lavabo – retrieved by Server 2 after the Presentation of the Gifts and used during the washing of the hands. It is removed by Server 4.

Finger Towel – retrieved by Server 2 (placed on left arm) after the Presentation of the Gifts and used during the washing of the hands. Removed by Server 4.



Chalice with Purificator – brought together up to the Altar by Server 2 after the General Intercessions (along with water cruet). The chalice is used at the Eucharistic celebration by the presider to hold wine which becomes the blood of Christ.

Paten – brought up by Server 1 after the General Intercessions. It is used to hold the presider's host which becomes the body of Christ.



Wine Cruet – holds wine and is brought up during the Presentation of the Gifts and then given to the Deacon by Server 1. Server 1 then places it on the Credence Table. It is removed by Server 3.



Open Ciborium – brought up during the Presentation of the Gifts and taken to the Altar by the presider. It holds hosts which are consecrated as the body of Christ. Server 2 waits to receive this from the presider after the Lord's Prayer and then places it on the Credence Table.



Corporal – brought up to Altar by Server 2 after the General Intercessions before Server 1 brings up the Roman Missal. It is a square cloth placed on the Altar. The chalice, paten, and ciborium are placed upon it for the Eucharistic celebration.



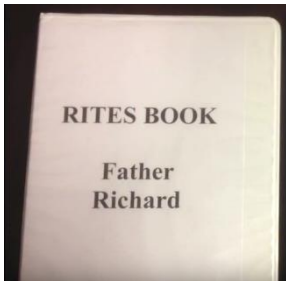
Gospel Book Cloth – given to Server 1 by the Deacon when Server 1 brings the Corporal up to Deacon after the General Intercessions. Server 1 unfolds it & places it on the credence table after picking up the Roman Missal.

NAMES OF OBJECTS AND PLACES



White Baptismal Garment – given to the Godmother by Server 4 after the baptized moves out of the baptismal font and the family moves to face the Monumental Doors

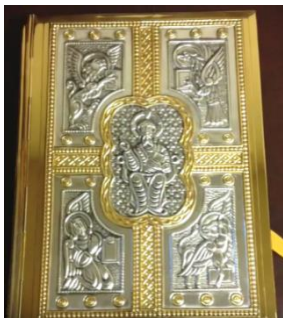
Baptismal Candle – given to the Godfather by Server 3 after the baptized moves out of the baptismal font and the family moves to face the Monumental Doors



Presider's Rites Book – Each priest has their own Rites Book on the presider's table beside his chair. It is held by Server 1 during baptisms and special blessings. It is held by Server 2 during the prayer for the Eucharistic Ministers for the Sick & Homebound and also for the announcements (when Fr. Ronald is presiding).



Roman Missal – book that contains all of the prayers that the priest uses at Mass. It is held by Server 1 at various times during Mass. When not held by Server 1, it is on the end of the credence table or on the Altar. The cover of the Roman Missal changes with the different parts of the Liturgical year.



Book of the Gospels – book that contains the Gospel readings for Sundays, solemnities, feasts of the Lord, and some ritual Masses



Closed Ciborium – contains consecrated hosts and is taken to the tabernacle by the Lead Extraordinary Minister of Holy Communion (Lead EM) after Communion

NAMES OF OBJECTS AND PLACES



Credence Table – table used to hold items that will be used during Mass



Altar – represents Christ's body. We bow when we cross in front of it.



Baptismal Font – holds the holy water that is used to baptize those coming into the Catholic faith



Paschal Candle – large candle beside the baptismal font. It represents the risen Christ and the light of the world. Server 2 lights the candle lighter from the paschal candle which is used to light the baptismal candles during baptisms

NAMES OF OBJECTS AND PLACES



Ambo – the place from which the word of God is proclaimed. The presider may also give his homily from the ambo.



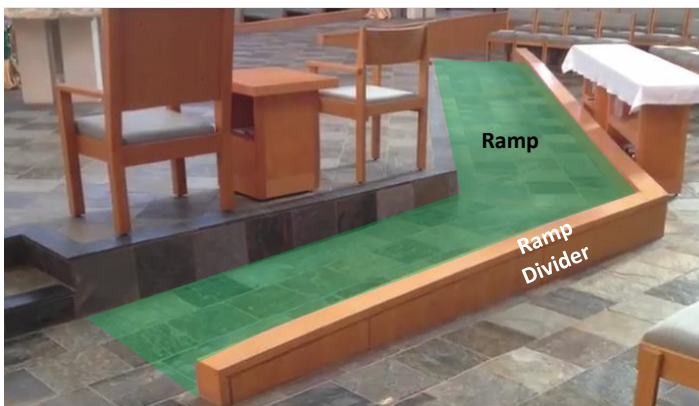
Tabernacle – holds the consecrated hosts left over from Mass. You know that Christ is present in the tabernacle when the red chancel candle is lit. You should always stop to genuflect in front of the tabernacle when the red candle is lit.



Presider's Chair – where the presider sits during Mass

Presider's Table – where the presider's Rites Book and other necessary items are kept for the presider and deacon during Mass

Deacon's Chair – where the deacon (or sometimes another priest) sits during Mass



Ramp – Servers may sometimes use the upper portion of the ramp to retrieve or place items on the Credence Table (Servers no longer use the ramp as a main way to move – the steps at the rear of the Altar are now used instead of the ramp)

Ramp Divider – what servers should never step over.

NAMES OF OBJECTS AND PLACES



Monumental Doors – The main doors of the sanctuary

Monumental Door Aisle – the aisle leading up to the monumental doors. The servers line up behind the cross bearer for the entrance procession in the monumental door aisle as well as process out at the end of Mass up this aisle. Servers 2 & 4 turn toward the Monumental Door Aisle at the end of Mass immediately after retrieving their candles for the recessional.



Choir Aisle – one of two ways servers use to move during Mass (the other way is by way of the steps at the rear of the Altar). The candle holders of Server 1 & 3 are nearest to the choir aisle.



Marian Garden Aisle – aisle near the Marian garden. Servers 1 & 3 turn toward the Marian Garden Aisle at the end of Mass immediately after retrieving their candles for the recessional.



Ambo Aisle – aisle near the ambo. The candle holders of Servers 2 & 4 are near the ambo aisle.

NAMES OF OBJECTS AND PLACES



Alb – what is worn by altar servers. Priests and deacons may also wear albs. On altar servers, albs should be long enough to reach their ankles. They are white as a reminder of baptism.



Candle Lighter/Snuffer – what is lit from the Paschal candle by Server 2 during a baptism



Silver Tray with Pyxes – tray is brought up during the Presentation of the Gifts and given to the Deacon by Server 2. Pyxes hold unconsecrated, low gluten hosts or wheat hosts and are then consecrated. The silver tray is held by Server 3 (with pyxes holding *consecrated* hosts) during the prayer for the Eucharistic Ministers for the Sick & Homebound. Server 3 returns the tray to the credence table (not where the Roman Missal is placed)



Thurible (Censer) – metal container in which incense is burned. It is hung from a long chain so that it can be swung to disperse the incense smoke and aroma. The person who carries the thurible is called the thurifer. The thurible and boat are kept on a stand in the working sacristy.

Boat – small vessel which holds incense to be used in the thurible



Holy Water Bucket and Sprinkler (aspergillum/aspergil) – the holy water bucket holds the holy water so that the presider can dip the sprinkler in the bucket and sprinkle the people or objects to be blessed.



Anointing Oil (Oil of the Sick) – a large glass chrisal holds the anointing oil. The three small glass vessels are filled with the oil and used by the priests during special Masses to anoint parishioners desiring the Anointing of the Sick.